

January 4 - February 16

#### Cady Hall

Journey Stories uses images, audio, and artifacts that illustrate the critical roles travel and movement have played in our personal heritage and building our diverse American society. Follow the threads of water, people, and progress through time in "A Woven Journey," Patagonia Library's local history exhibit.

Monday-Sunday 12:00pm - 5:00pm. Extended hours Tuesday and Saturday.  
520-394-2010

[www.patagoniapubliclibrary.org](http://www.patagoniapubliclibrary.org)

Saturday, January 4 at 7:00pm

#### Tin Shed Theatre

Author Ken Lamberton presents "Chasing Arizona," a slide show and often humorous talk describing his journey to photograph Arizona's twelve state symbols, along with a few of his own proposed symbols.

Hosted by Friends of the Patagonia Library  
[www.patagoniapubliclibrary.org](http://www.patagoniapubliclibrary.org)

Saturday, January 11 at 11:00am & 1:00pm

#### The Historic Empire Ranch

Docent-led walking tours of the historic Empire Ranch, an introduction to the history of the Empire Ranch families and the buildings in which they worked and lived. For directions go to:

[www.empireranchfoundation.org](http://www.empireranchfoundation.org)

Friday, January 17 at 7:00pm

#### Patagonia Library

Scott Warren presents "Despoblado: Immigration, Conservation, and Artifact in the Arizona-Mexico Borderland," a story of desert struggle that has long been a feature of the southern Arizona borderlands. A contemporary archaeology project documented by Scott and photographer Jason Roehner.

Hosted by Friends of the Patagonia Library  
[www.patagoniapubliclibrary.org](http://www.patagoniapubliclibrary.org)

Thursday, February 6 at 1:00pm

#### Patagonia Senior Center

##### A Living History Presentation

Ms. Elena Diaz Bjorkquist portrays the renowned spiritual healer Teresa Urrea. Step into the past and enjoy horchata, hot chocolate, and empanadas.

Hosted by the Patagonia Woman's Club

Saturday, February 8 from 10:00am - 3:00pm

#### The Historic Empire Ranch

##### Cowboy Life Family Fun Day

Attend the opening of the Cowboy Life exhibit to learn about the Empire Ranch's vaquero and cowboy traditions, their methods of working with cattle, and the journeys which brought them to work at the Empire Ranch. Other events include kids' games and activities, music, cowboy gear displays and demonstrations, and ranch house tours. For directions go to:

[www.empireranchfoundation.org](http://www.empireranchfoundation.org)

Sunday, February 9 from 4:00pm - 7:00pm

#### Patagonia Senior Center

##### Potluck Dinner

The Senior Citizens of Patagonia host a potluck. Please bring a prepared dish that represents a food memory from your heritage.

Saturday, February 15 at 7:00pm

#### Patagonia Library

Diana Hadley of the Arizona State Museum presents "Borderland Trails." This illustrated talk presents an overview of historic travel routes through the border areas of southern Arizona and New Mexico and northern Sonora and Chihuahua.

Hosted by the Patagonia Area Resource Alliance  
[www.patagoniaalliance.org](http://www.patagoniaalliance.org)



## SCHEDULE OF EVENTS



Saturday, January 18

#### Patagonia Museum Day

##### Patagonia Library

10:30am - The Patagonia Museum Annual Meeting  
1:00pm - Dr. Michael Brescia from the University of Arizona highlights the historic and cultural influences of the Spanish and Mexican migration into our region.  
3:00pm - Patagonia Museum's Historic Patagonia Walking Tour. Meet at the Train Depot.

[www.thepatagoniamuseum.org](http://www.thepatagoniamuseum.org)

Saturday, January 25 from 7:00pm - 10:00pm

#### Gertie and the T.O. Boyz

##### Tin Shed Theater

Gertie and the T.O. Boyz are an award-winning Tohono O'odham Waila band. Waila combines various forms of dance music such as polka, two-step, cumbia, and mazurka, with a variety of percussion, horn, and string instruments. Gertie sings vocals, plays guitar, bass, and accordion and is the only female band leader on the Tohono O'odham Nation! A musical performance and community dance, includes a history of Waila, Chicken Scratch music.

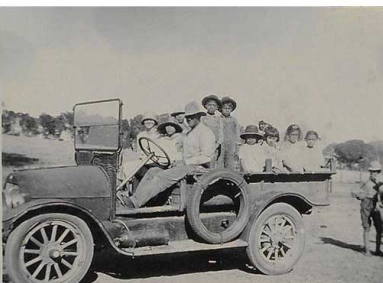
Hosted by Friends of the Patagonia Library  
[www.patagoniapubliclibrary.org](http://www.patagoniapubliclibrary.org)



Funded by the Smithsonian Institution, the Arizona Humanities Council, Patagonia Regional Community Foundation, Owen and Arlene McCaffrey,

Friends of the Patagonia Library, the Town of Patagonia, and the Arizona State Library, Archives and Public Records Agency under the Library Services and Technology Act, which is administered by the Institute of Museum and Library Services.

[www.patagoniapubliclibrary.org](http://www.patagoniapubliclibrary.org)  
520.394.2010



**PATAGONIA**  
REGIONAL COMMUNITY FOUNDATION



**Arizona Humanities Council**  
Sharing cultures. Enriching communities.



**Smithsonian Institution**



Friday, January 31 at 5:30pm

#### Santa Cruz Foundation for the Performing Arts

##### Santa Rita Abbey

The Santa Cruz Foundation for the Performing Arts honors the rich musical tradition of our Sonoran and southeastern Arizona area. The choir will perform Renaissance music brought by Spanish Padres to the Americas in the 16<sup>th</sup> century, 18<sup>th</sup> century Misa music of the Mission Chapels, and traditional border folk favorites sung in Latin, Spanish, and Nahuatl.

[www.scfpapresents.org](http://www.scfpapresents.org)

Saturday, February 1 from 10:00am - 4:00pm

#### The Bowman and Stradling History Center

##### Pioneer Hall, Sonoita Fairgrounds

View exhibits detailing the westward and northward expansion to Sonoita/Elgin/Patagonia/San Rafael Valley, a time-line of events from 1862-1930, interactive displays, re-enactors, homesteading stories, and music.

12:00pm - Enjoy albondigas, tortillas and salsa, and chuck wagon peach cobbler.

1:00pm - Jim Turner, historian, talks about westward expansion and the Homestead Act.

2:00pm - Patricia Preciado Martin, author of many books on Mexican-American culture speaks on the northward migration from Mexico.

(continued on back page)

